

MEETING AGENDA

- Introductory Presentation
- Comment Period
- Engagement Exercises



BELLEVUE BOROUGH ACTIVE TRANSPORTATION PLAN PUBLIC OPEN HOUSE

Bellevue Borough, Allegheny County, Pennsylvania

November 20, 2024

AGENDA

- What is Active Transportation?
- Purpose of the Active Transportation Plan
- Project Scope
- Work Completed To Date
- Introduction To Engagement Exercises
- Comment Period

WHAT IS ACTIVE TRANSPORTATION?

- Active transportation generally refers to the movement of people and goods through non-motorized means.
 - Connections to mass transit and the use of motor assisted transportation devices are also part of the planning process.
- Active transportation networks are made up of bike lanes and routes, sidewalks, and multi-use trails. These facilities are enhanced through Americans with Disabilities Act (ADA) and Public Right-of-Way Access Guidelines (PROWAG) standards to help ensure equitable mobility.
- Active transportation planning aims to create equitable connectivity, for the purposes of improving public safety, sustainability, public health, and enabling active modes to be used as a primary source of transportation.



PROJECT PURPOSE

- This project will develop an Active Transportation Plan for the southern portion of the Borough of Bellevue.
- The primary objective of this project is to establish a framework to create a safe, accessible, connected walking and biking network.
- The Plan will identify specific projects and routes that can be developed or enhanced to improve safety and increase access to transit and other everyday destinations.
- This project is being completed through a collaboration between the Borough of Bellevue and Bona Fide Bellevue. HRG is serving as the planning consultant.
- The project is funded by a grant from the WalkWorks program.



PROJECT STUDY AREA

- The study will focus on the southern portion of the Borough:
 - The portion of the Ohio River Boulevard/Route 65 corridor located within Census Tract 4315-004
 - The mixed-use and residential areas, a walkable elementary school, and the downtown business district located within Census Tracts 4315-001 and -003.



PROJECT STUDY AREA

- Community destinations outside the study area will be included:
 - Northgate High School and playing fields
 - Bayne Park
 - Gillott Park
 - The Bellevue Memorial Park
 - Recreational assets and facilities in surrounding communities
 - The Three Rivers Heritage Trail system which is planned for expansion along the Ohio River



PROJECT SCOPE

Phase 1: Stakeholder & Public Engagement

- Task 1.1 Steering Committee Meetings
 - The Steering Committee will meet three (3) times throughout the planning process.

- Task 1.2 Public Engagement Meetings
 - Public Engagement Meeting 1: This meeting will consist of attendance at one or multiple community events intended to raise awareness of the project, announce public opportunities to provide input, and gather the community's vision for active transportation.
 - Public Engagement Meeting 2: This meeting will occur at the end of the planning process and consist of a presentation during the May 2025 Tri-Boroughs Joint Planning Commission meeting. This will be during the 45-day public engagement period.

PROJECT SCOPE

Phase 1: Stakeholder & Public Engagement

- Task 1.3 Online Mapping & Community Survey
 - This will consist of an online community survey and online mapping tool that will allow the public to comment on current active transportation conditions, and their wants and needs for the network.
- Task 1.4 Stakeholder Interviews
 - Two (2) to three (3) focus group style stakeholder interview sessions will be held to learn more about existing conditions and local trends in active transportation, and desired improvements from the perspective of the key stakeholders.

PROJECT SCOPE

Phase 2: Existing Conditions & Needs Assessment

- Task 2.1 Related Plans, Programs, & Policies Review
 - HRG staff will review relevant existing plans, programs and/or policies adopted by the Borough, neighboring municipalities, and the surrounding region.
 - Staff will assess the degree to which they support active transportation and suggest revisions and new policies to support active transportation planning.

PROJECT SCOPE

Phase 2: Existing Conditions & Needs Assessment

- Task 2.2 Data Collection & Assessment
 - Data will be gathered, including but not be limited to:
 - Census Data- demographics, socio-economic characteristics, existing travel behavior, etc.
 - Geographic & Natural Characteristics
 - Zoning & Land Use
 - Transportation Data- the roadway network, speed limits, traffic counts, crash data, etc.
 - Public Health Data from the Community Health Needs Assessment (CHNA)
 - This data will then be used to create an Infrastructure Inventory and Safety Analysis.
 - Three (3) walk audits and one (1) bike audit will also be performed during this Task.
- Task 2.3 Existing Conditions Report
 - This report will summarize the findings from Task 2.2.

PROJECT SCOPE

Phase 3: Implementation Plan Development

- Task 3.1 Creation of Projects List
 - Based on the input gathered from Phase 1, and the data and findings from Phase 2, a list of non-motorized network improvement projects will be developed to help guide improvements to the Borough's walking and biking network.
- Task 3.2 Project Prioritization
 - Based on data, public input, and staff and Steering Committee guidance, HRG will draft overarching, **measurable goals and objectives** for the plan, as well as **prioritization criteria** for future projects, which can be used to help organize the project list established in Task 3.1.

PROJECT SCOPE

Phase 3: Implementation Plan Development

- Task 3.3 Implementation Table
 - HRG staff will identify various implementation strategies for future bicycle and pedestrian facilities. This will also include the following:
 - Top infrastructure projects to pursue design (and construction) funding for immediately.
 - Quick implementation projects that the borough can put in place right away using internal resources, staff, and materials.
 - Active transportation-related policy updates to pursue.
 - One education and encouragement activity or event that the municipality and/or municipal partners can stage within the next year.

- Task 3.4 Multi-Modal Vision Map Development
 - This map will visually depict the project list and indicate prioritization of projects as appropriate.
 - This, and all other maps and graphics will be shared electronically as part of the final deliverables.

PROJECT SCOPE

Phase 4: Plan Development, Capacity Building & Adoption

- Task 4.1 Draft Plan Development
 - With assistance from Bona Fide Bellevue, HRG staff will create a draft plan to be reviewed by Borough Staff and the Steering Committee.
 - The initial draft will be developed in keeping with the schedule required by the WalkWorks grant, with a presentation to the Steering Committee tentatively planned for April of 2025.
- Task 4.2 Final Plan & Adoption
 - This revised draft will then be made available to the public for their review as part of a 45-day public review process, beginning on or around May 9, 2025.
 - HRG Staff will provide a presentation of the draft to the Joint Planning Commission during an advertised and open public meeting.
 - HRG staff will present the plan to the Borough Council for adoption on June 24, 2025.

PROJECT SCHEDULE

	Month 1	Month 2	Month 3	Month 4	Month 5	Month 6	Month 7	Month 8	Month 9	Month 10
	September	October	November	December	January	February	March	April	May	June
Bellevue Borough Active Transportation Plan										
Phase 1. Stakeholder & Public Engagement										
Steering Committee Meetings (3)				Steer #2			Steer #3			
Public Engagement Meeting		Meeting #1								
Online Mapping and Community Survey										
Development of Online Interactive Map										
Development of Online Survey										
Online Engagement Available										
Processing Survey and Map Results										
Stakeholder Interviews										
Phase 2. Existing Conditions & Needs Assessment										
Related Plans, Programs, and Policies Review										
Data Collection and Assessment										
Infrastructure Inventory										
Safety Analysis										
Walk Audits (3)										
Bike Audit (1)										
Existing Conditions Report										
Phase 3. Implementation Plan Development										
Creation of Projects List										
Project Prioritization										
Implementation Table										
Multi-Modal Vision Map Development										
Phase 4. Plan Development, Capacity Building & Adoption										
Draft Plan Development										
Development of Plan Components and Document										
Final Plan & Adoption										
Revisions/ Edits										
45-day Public Review Period										
Public Presentation to the Joint Planning Committee										
Presentation to Borough Council										*
Project Management										
Project Management										

*Adoption anticipated at the June 24 Borough Council Meeting

WORK COMPLETED TO DATE

Student Survey

- 5th & 6th graders at Bellevue Elementary
- 104 responses as of 11/19

BES Student Survey – Bellevue Active Transportation Plan

Introduction

Active transportation means getting around by walking, biking, using a scooter, skateboard, wheelchair, or other ways you move yourself. It can be for fun, to get to school, or to go other places. Using active transportation helps us stay healthy, cuts down on traffic, and is better for the environment.

Bellevue Borough is creating a plan to make it easier and safer for people to use active transportation, and we need your help! By sharing your thoughts, you can help us make sure everyone can travel safely and comfortably, no matter how they get around.

In this survey, "walk" includes using a wheelchair, and "bike" and "biking" also include riding scooters and skateboards.

We ask about race, ethnicity and language to help us make sure everyone's voice is heard and included in our planning efforts.

To access the survey in other languages, please click on the globe icon in the upper left corner of the screen.

Thanks for helping!

* Indicates required question

1. What grade are you in?*

5th

6th

WORK COMPLETED TO DATE

Community Survey

69 responses as of 11/19

Bellevue Borough Active Transportation Survey

Introduction

Active Transportation refers to any form of human-powered travel, such as walking or biking, and includes other modes like wheelchairs or other mobility devices, scooters, and skateboards. These modes may be used as the primary means of transportation, or to access other modes like the bus or light rail. Active transportation focuses on using active travel for daily commutes, errands, or leisure, promoting healthier lifestyles, reducing traffic congestion, and minimizing environmental impact.

Bellevue Borough is developing an Active

Transportation Plan for our community, and we'd love to hear from you! Your feedback will help us understand how different groups use and experience active transportation. Your input will help us make recommendations that will help to create a more active and safe

for people of all ages.
The survey takes about 5-10 minutes to complete. If you have any questions, please contact Lori

To access the survey, click on the link at the top of the screen. If you have any questions, please contact Lori

* Indicates required

Demographic information helps us understand our diverse populations in order to provide better insights into how we can improve active transportation travel.



**BONA FIDE
BELLEVUE**



**Bellevue
Borough**



WE WANT TO HEAR FROM YOU!

Bellevue Borough is developing an Active Transportation Plan for our community, and we'd love to hear from you! Active transportation refers to any form of human-powered travel, such as walking or biking, and includes other modes like wheelchairs or other mobility devices, scooters, skateboards, and accessing transit.

Scan the QR code to the right to access the online survey and web comment mapping tool. If you would like a printed copy of the survey, you can pick one up and return it at one of the locations listed below. To thank you for your time, we're holding a drawing for a chance to win a **\$25 gift card**.



<https://www.bonafidebellevue.org/activetransportation/>

Andrew Bayne Memorial Library
34 N. Balph Ave.,
Pittsburgh, PA 15202

PrimeTime Senior Center
440 Lincoln Ave
Pittsburgh, PA 15202

COMMUNITY ENGAGEMENT

Online Mapping Tool

Demonstration

Bellevue's Active Transportation Map

Welcome to Bellevue's Interactive Active Transportation interface. Please leave a comment about your experience in Bellevue with walking, cycling, using a wheelchair, and accessing transit. Drop pins or draw a line and add comments to tell us where you have concerns for things like pedestrian safety/better crossings or to identify where you would like to see sidewalks, sidewalk improvements, trails, bike routes or bike lanes, and improved accessibility. If you have additional questions about filling out the map, please contact spcgis@spcregion.org.

Development of this Active Transportation Plan is funded by Bellevue Borough with a grant from the Pennsylvania Department of Health WalkWorks initiative. WalkWorks funds are provided by the State Physical Activity and Nutrition Grant and the Preventative Health and Health Services Block Grant.

The study area focuses on the southern area of the borough, but considers connections to key destinations outside the study area.

How to Use App

To place a pin or draw a line and comment on the map, click the pin or line 'New Feature' under the 'Create Features' tab. You will then be prompted to click on the map and insert your comment.



Bellevue's Active Transportation Map

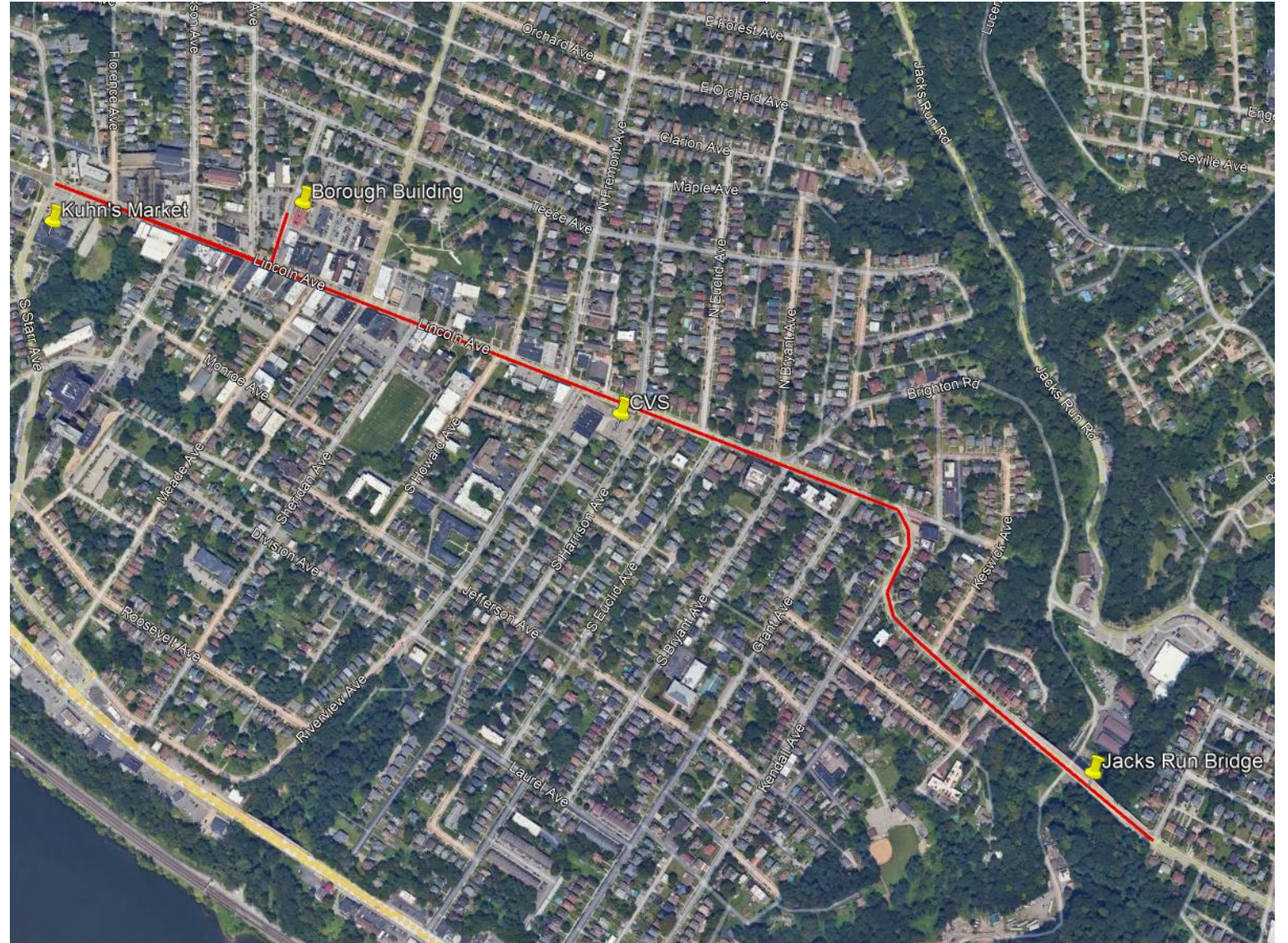
The screenshot displays the interactive mapping tool. On the left, a map of Bellevue, PA, is shown with a highlighted study area. The map includes various features like roads, parks, and water bodies. On the right, there is an 'Editor' panel with several sections:

- Settings:** A dropdown menu for configuration options.
- Edit features:** A 'Select' button with a mouse cursor icon.
- Create features:** A 'Filter types' input field.
- Bellevue Comment Categories:** A radio button for 'New Feature'.
- Proposed Walking Biking Connections:** A legend showing a line icon for 'New Feature'.
- Bellevue Comment Categories (List):**
 - Accessibility Improvements
 - Bicycle Enhancements (bike lanes, bike racks, etc.)
 - Destinations
 - Lighting
 - Pedestrian Enhancements (sidewalks, crosswalks, etc.)
 - Trails and Green Space Improvements

WALKING & BIKING AUDITS

Lincoln Ave Bike Audit

November 7, 2024



WALKING & BIKING AUDITS

Lincoln Ave Bike Audit

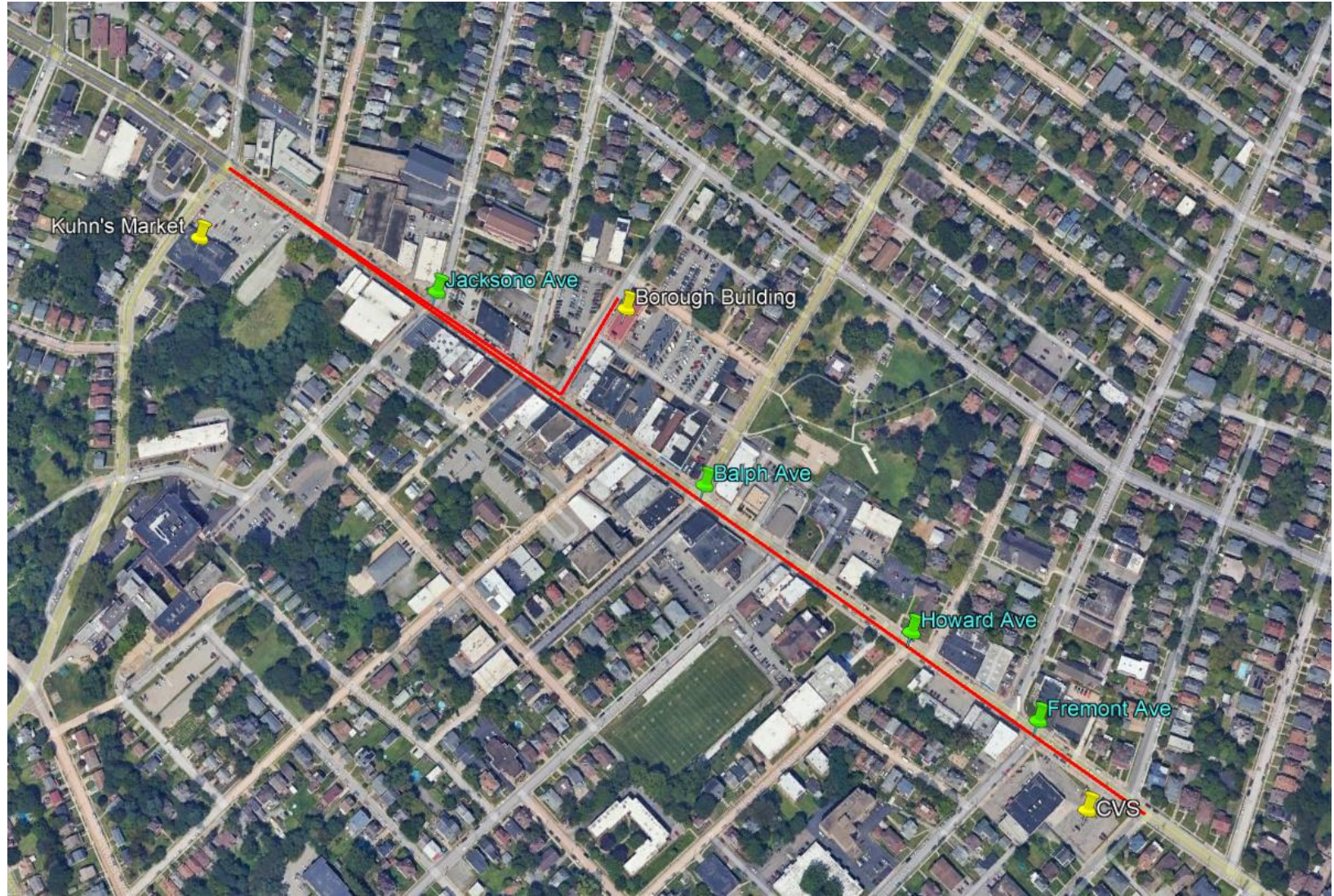
November 7, 2024



WALKING & BIKING AUDITS

Lincoln Ave Walk Audit

November 12, 2024



WALKING & BIKING AUDITS

Lincoln Ave Walk Audit

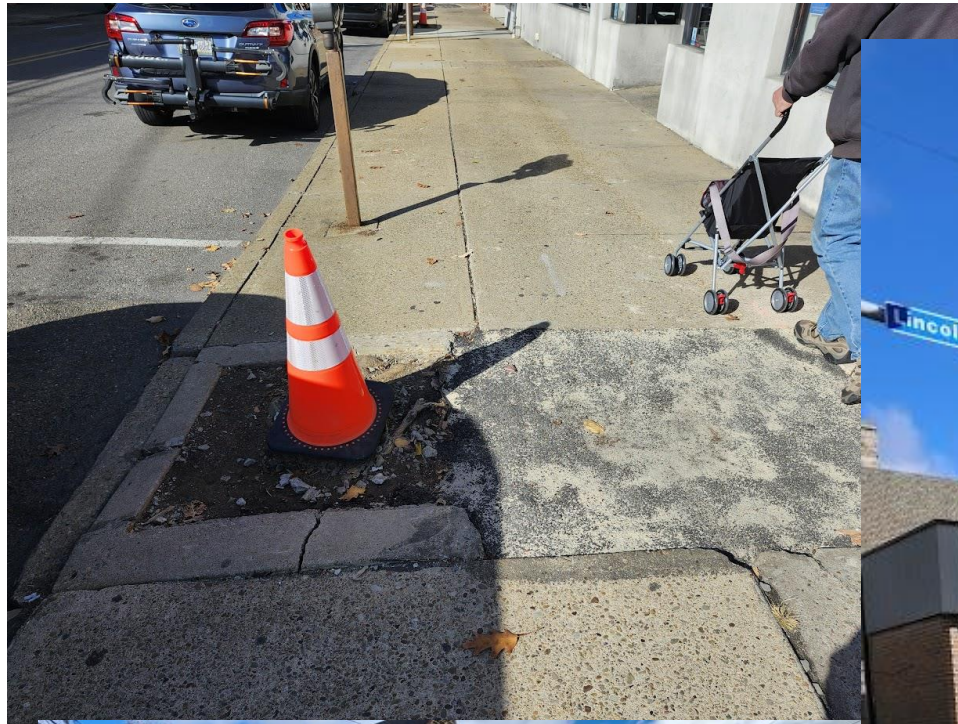
November 12, 2024



WALKING & BIKING AUDITS

Lincoln Ave Walk Audit

November 12, 2024



WALKING & BIKING AUDITS

Route 65 Walk Audit

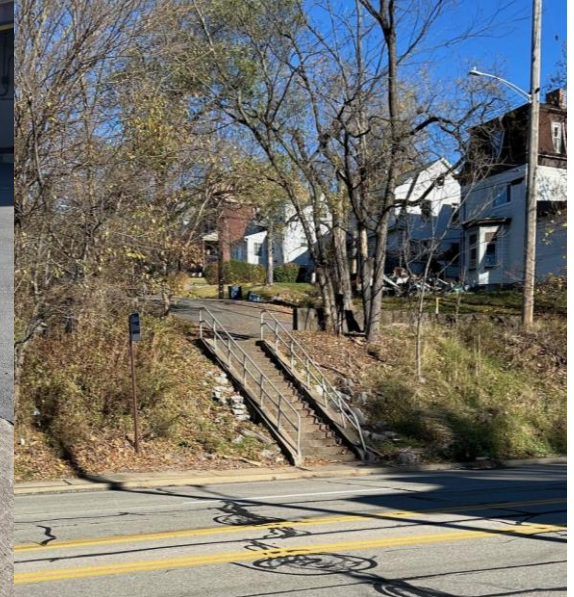
November 12, 2024



WALKING & BIKING AUDITS

Route 65 Walk Audit

November 12, 2024



WALKING & BIKING AUDITS

Route 65 Walk Audit

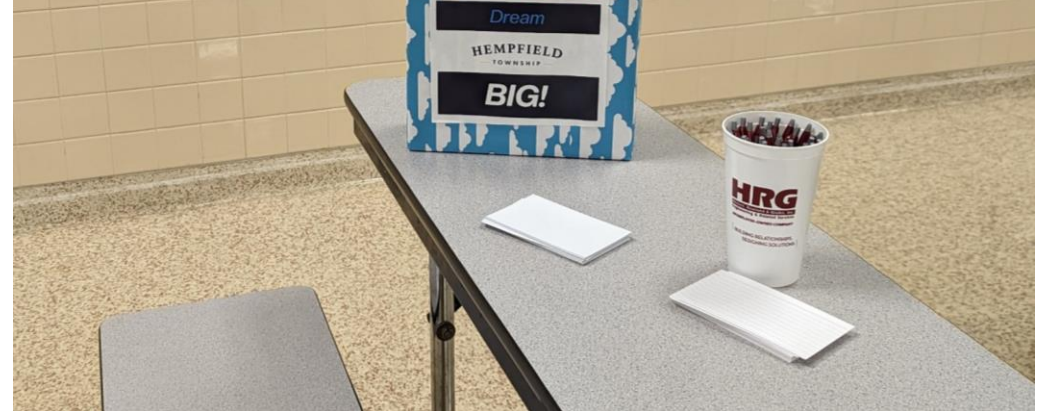
November 12, 2024



ENGAGEMENT EXERCISES

Dream Box

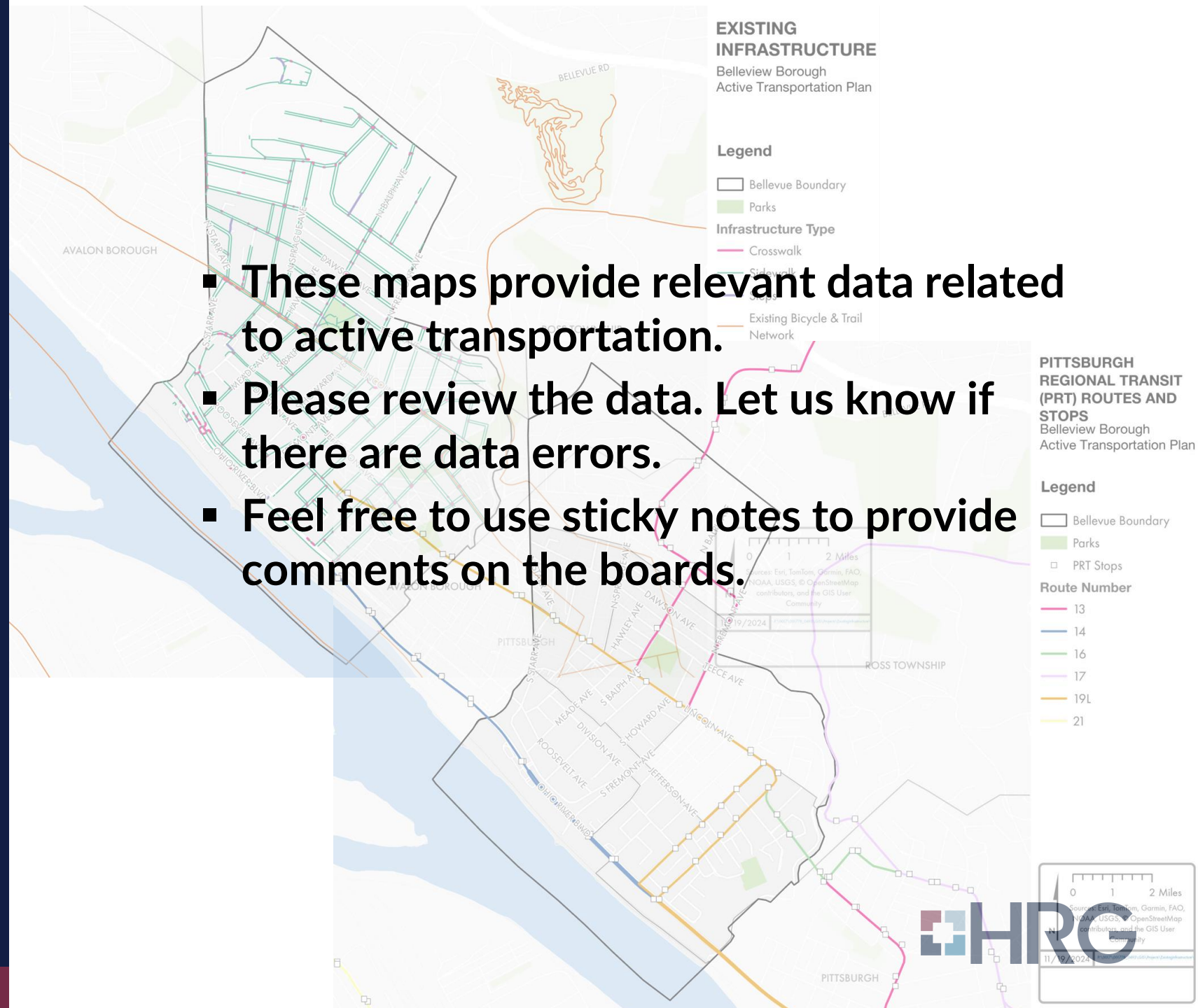
Use the notecards to share your dreams and help create a vision for active transportation in Bellevue. Dream Big!



ENGAGEMENT EXERCISES


Information Boards

- These maps provide relevant data related to active transportation.
- Please review the data. Let us know if there are data errors.
- Feel free to use sticky notes to provide comments on the boards.



ENGAGEMENT EXERCISES

Mapping

- 
- Where do you currently walk and bike?
 - Where would you like to be able to walk and bike?
 - Are you able to safely access transit?
 - What issues do you encounter walking, biking, or taking transit?
 - **WRITE ON THE MAPS**

ENGAGEMENT EXERCISES

Online Exercises

- Laptops and tablets are provided if you would like to complete our online engagement.

Bellevue Borough Active Transportation Survey

Introduction

Active Transportation refers to any form of human-powered travel, such as walking or biking, and includes other modes like wheelchairs or other mobility devices, scooters, and skateboards. These modes may be used as the primary means of transportation, or to access other modes like the bus or light rail. Active transportation focuses on using active travel for daily commutes, errands, or leisure, promoting healthier lifestyles, reducing traffic congestion, and minimizing environmental impact.

Bellevue Borough is developing an Active

Transportation Plan for our community, and we'd love to hear from you! Your feedback will help us understand how different groups use and experience active transportation. Your input will help us make recommendations that will, when implemented, improve safety and comfort for people of all ages and abilities, whether they choose to drive or use active modes of travel. The survey takes about 10 minutes to complete, and all responses are anonymous. To thank you for your time, we're holding a drawing for a chance to win a \$25 gift card. If you'd like to enter, please provide your contact information at the end of the survey.

To access the survey in other languages, please click on the globe icon in the upper left corner of the survey.

Bellevue's Active Transportation Map

The screenshot displays the 'Bellevue's Active Transportation Map' interface. The map shows the town of Bellevue with various transportation features highlighted in green and blue. A sidebar on the right contains an 'Editor' panel with options for 'Settings', 'Edit features', 'Create features', and 'Bellevue Comment Categories'. The 'Create features' section includes a 'Filter types' input field and a 'New Feature' button. The 'Bellevue Comment Categories' section lists various improvement types with corresponding icons: Accessibility Improvements, Bicycle Enhancements, Destinations, Lighting, Pedestrian Enhancements, and Trails and Green Space Improvements.

THANK YOU FOR YOUR PARTICIPATION!

QUESTIONS OR COMMENTS?

CONTACT INFO:

Laura Ludwig
lludwig@hrg-inc.com

Lori Morgan
lmorgan@hrg-inc.com

Leann Chaney
leann@bonafidebellevue.org

